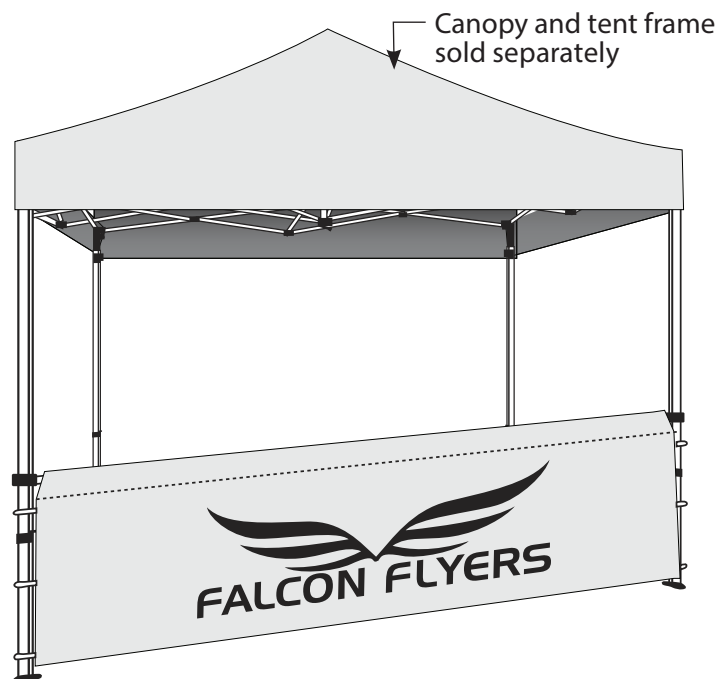
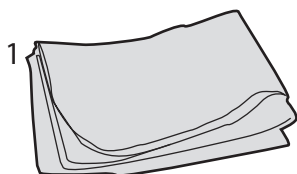


# Half Wall

## Product Parts

1. Half Wall



NOTE:

\*Stabilizing bar and Clamps come with Half Wall Kit(s).  
(Omni Tent frame does not have clamps)

## Display Set-Up

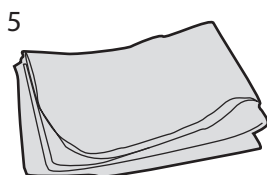
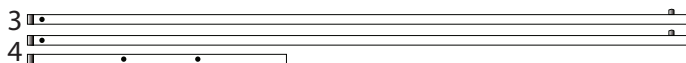
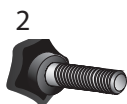
(NOTE: the following steps are for the Stabilizer Bar)

## Product Parts

- 1 - Molded Plastic Clamps (see chart to right)
- 2 - Bolt Handle (2)
- 3 - Long Bar (2)
- 4 - Short Bar (1)
- 5 - Half Wall

\* 5' Economy bar is one piece

\* Omni is bar only (no clamps)



### Clamp Options

1



Deluxe/Standard/  
Economy



Premium LEFT



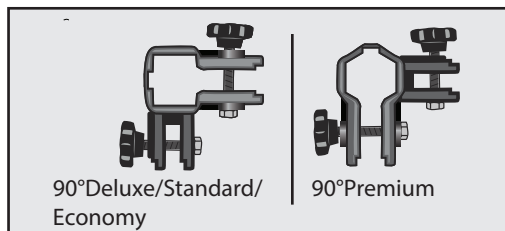
Premium RIGHT



Elite LEFT



Elite RIGHT



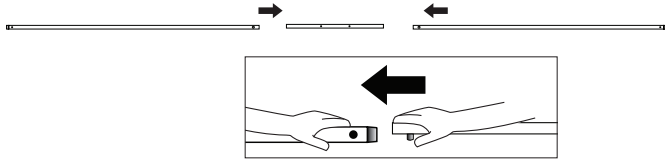
90° options sold separately

Omni  
N/A

## Assembly Continued

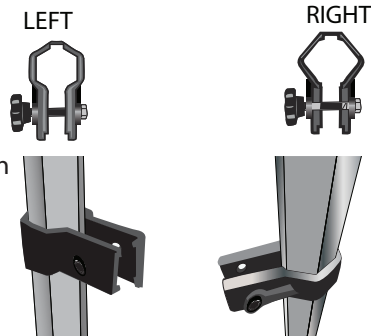
### Step 1

Insert end of Long Bar (3), while pushing down the button, into one end of the Short Bar (4). Verify that the release button clicks into place. Repeat for other end. NOTE: the button will be on the underside of your stabilizing bar.



### Step 2\_NOTE:

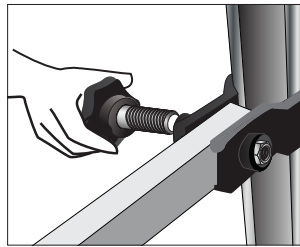
Please note: The Premium and Elite tent Molded Plastic Clamps (1) are molded to ensure the correct fit around the hexagon tent leg. Verify that you have the correct Clamp on the correct tent leg.



### Step 4

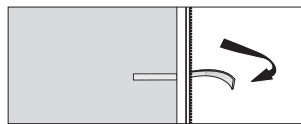
Insert Bolt Handle (2) through the hole on the Molded Plastic Clamp and the stabilizing bar. Secure to the threaded insert on the Molded Plastic Clamp.

\*Elite clamps have two bolts.

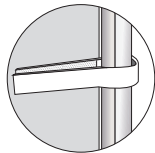


### Step 6

Loop all straps around each leg of the tent Frame and secure hook to loop that is sewn to the Half Wall (5).



NOTE: straps fit best when hook & loop strips are aligned flush to one another.



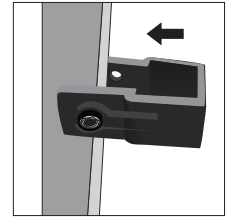
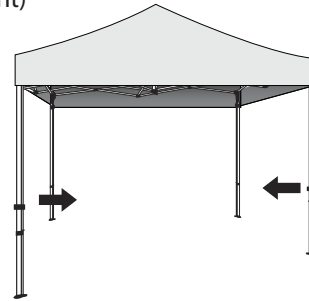
## Storage and Care

Wipe clean with a damp cloth. Store in a cool, dry place.

### Step 2

On existing tent frame, place one of the Molded Plastic Clamps (1) around the leg. The open end of the Molded Plastic Clamp (1) should face towards the other tent leg you want the stabilizing bar to span. Clamp threaded inserts should face toward inside of tent\*\*\*

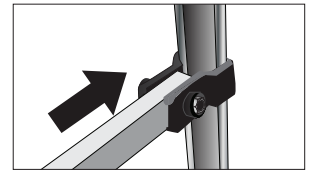
Repeat for opposite tent leg. (See Step 2 note for Premium & Elite tent)



Deluxe/Standard/Economy

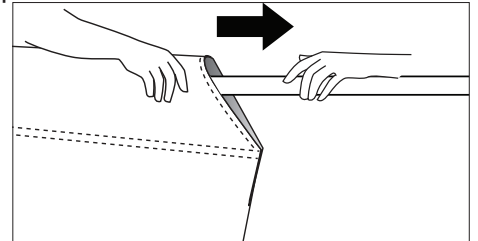
### Step 3

Insert one end of the stabilizing bar (created in Step 1) into one of the Molded Plastic Clamp (1)



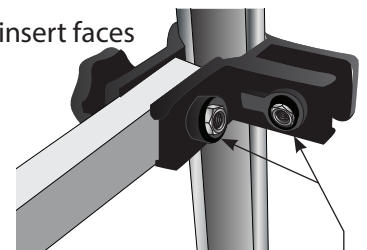
### Step 5

With one end of the stabilizing bar secure, insert bar into the pole pocket on the Half Wall (5). Once fully on, secure bar to other tent leg Molded Plastic Clamp, as shown in Step 4.



## INSTALL NOTE

\*\*\* Make sure threaded insert faces toward inside of the tent.



THREADED INSERT